



MEETS THE CARABINER REQUIREMENTS OF NFPA 1983, STANDARD ON LIFE SAFETY ROPE AND EQUIPMENT FOR EMERGENCY SERVICES, 2017 EDITION.

EMERGENCY SERVICES CARABINER IN ACCORDANCE WITH NFPA 1983 - 2017.

- 300090 CMC PROSTEEL SCREW-LOCK D BLACK/BRONZE CARABINER, GENERAL USE (G) MBS 50 KN (11,240 LBF)
- 300091 CMC PROSTEEL SCREW-LOCK D BLACK/BLACK CARABINER, GENERAL USE (G) MBS 50 KN (11,240 LBF)
- 300092 CMC PROSTEEL AUTO-LOCK D BLACK/SILVER ANSI CARABINER, GENERAL USE (G) MBS 50 KN (11,240 LBF)
- 300093 CMC PROSTEEL SCREW-LOCK OVAL BLACK/BRONZE CARABINER, GENERAL USE (G) MBS 40 KN (8,992 LBF)
- 300094 CMC PROSTEEL AUTO-LOCK OVAL BLACK/SILVER ANSI CARABINER, GENERAL USE (G) MBS 40 KN (8,992 LBF)
- 300096 CMC/KONG DNA AUTO-LOCK BLACK/SILVER CARABINER, GENERAL USE (G) MBS 40 KN (8,992 LBF)

MEETS THE REQUIREMENTS OF ANSI Z359.12:2019: CONNECTING COMPONENTS FOR PERSONAL FALL ARREST SYSTEMS.

- 300092 CMC PROSTEEL AUTO-LOCK D BLACK/SILVER ANSI CARABINER
- 300094 CMC PROSTEEL AUTO-LOCK OVAL BLACK/SILVER ANSI CARABINER
- 300095 CMC/KONG DNA AUTO-LOCK BLACK/SILVER ANSI CARABINER

The compliance of conformity to ANSI Z359.12:2019 performed by the following the notified bodies:

- n° 0123 - TÜV SÜD Product Service GmbH Daimlerstraße 11 - 85748 Garching – Germany (300392 & 300394)
- n° 2008 DOLOMICERT scarl - zona industriale Villanova – 32013 Longarone (BL) – Italia (300395)

USER INFORMATION

User Information shall be provided to the user of the product. NFPA Standard 1983 recommends separating the User Information from the equipment and retaining the information in a permanent record. The standard also recommends making a copy of the User Information to keep with the equipment and that the information should be referred to before and after each use. Additional information regarding life safety equipment can be found in NFPA 1500, Standard on Fire Department Occupational Safety, Health, and Wellness Program, and NFPA 1858, Standard on Selection, Care, and Maintenance of Life Safety Rope and Equipment for Emergency Services and the ANSI Z359 series of Fall Protection standards.

INSPECTION

Inspect the equipment according to your department's policy for inspecting life safety equipment. Inspect the equipment prior to entry into service, after each use, and at least once every 12 months. The equipment should be thoroughly inspected by an inspector that meets your department's training standard for inspection of life safety equipment. Keep a record of the date, person performing the inspection and results, as well as the date of first use, name of users and any other pertinent information necessary to keep accurate track of the equipment's usage history in the equipment log or on a tag that attaches to the equipment. Each user should be trained in equipment inspection and should inspect the equipment before each use. Inspect the equipment for cracks, sharp edges, dents, corrosion, burrs or excessive wear. Minor nicks or sharp spots may be smoothed with an emery cloth. If any of the above is noted, or if the equipment has been subjected to shock loads, fall loads, or abuse other than normal use, remove the equipment from service and destroy it. If there is any doubt about the service ability of the equipment, remove the equipment from service and destroy it. The service life of equipment depends greatly on the type of use and the environment of use. Because these factors vary greatly, a precise service life of the equipment cannot be provided.

LIMITATIONS AND PROPER USE

All carabiners are designed to specific performance criteria. Be aware of load limitations, manner used, and proper technique. Do not overload a carabiner. Carabiners can fail under improper use conditions such as cross loading, gate open loading, loading other than major axis, applying a shear or torsional load to the carabiner, etc. If you are not sure of proper application or technique, seek proper training in carabiner use and technical rope application.

COMPATIBILITY

300092, 300094, and 300095 are connecting components in accordance with ANSI/ASSP Z359.12-2019, used to connect two or more pieces of equipment together in Personal Fall Arrest Systems. Ensure compatibility with other components in the fall protection system.

CARRYING, MAINTENANCE & STORAGE

Clean and dry this equipment after each use to remove any dust, debris and moisture. During use, carrying and storage keep the equipment away from acids, alkalis, rust and strong chemicals. Do not expose the equipment to flame or high temperatures. Store in a cool, dry location. Do not store where the equipment may be exposed to moist air, particularly where dissimilar metals are stored together.

MATERIALS

Connector Materials:

- **Frame and Gate:** Carbon Steel
- **Additional Components (varies per model):** Steel, Bronze, Stainless Steel, Delrin

REPAIR

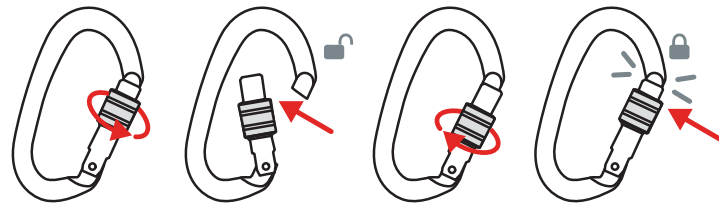
All repair work shall be performed by the manufacturer. All other work or modifications void the warranty and releases CMC/KONG from all liability and responsibility as the manufacturer.

SAMPLE LOG

The sample log suggests records that should be maintained by the purchaser or user of life safety equipment.

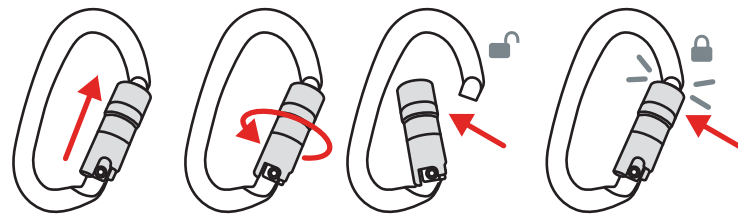
Equipment Inspection and Maintenance Log			
Item #	Date in Service		
Brand/Model	Strength		
Date	How Used or Maintained	Comments	Name

Screw-Lock Use



(1)Unscrew gate to unlock (2)Push gate in to open (3)Screw gate to close (4)Confirm gate locking

Auto-Lock Use



(1)Push gate up (2)Twist gate to unlock (3)Push Gate in to open (4)Release Gate to Lock (5)Confirm Gate Locking

⚠ Do not use if gate fails to lock or open properly.



CMC Rescue, Inc.
6740 Cortona Drive, Goleta, CA 93117, USA
805-562-9120 / 800-235-5741
cmcpro.com
ISO 9001 Certified
©2021 CMC Rescue, Inc. All rights reserved
CMC and **XC** are registered marks of CMC Rescue Inc.
CMC Control No.: 300090ML_Rev00

NFPA 1983 (2017 ED) "G"		NFPA 1983 (2017 ED) "G" AND ANSI Z359.12 (19)		ANSI Z359.12 (19)	
	300090 CMC ProSteel Screw-Lock D Black/ Bronze Carabiner		300091 CMC ProSteel Screw-Lock D Black/ Black Carabiner		300092 CMC ProSteel Auto-Lock D Black/Silver ANSI Carabiner
	300093 CMC ProSteel Screw-Lock Oval Black/ Bronze Carabiner		300096 CMC/Kong DNA Auto-Lock Black/Silver Carabiner		300094 CMC ProSteel Auto-Lock Oval Black/ Silver ANSI Carabiner
					300095 CMC/Kong DNA Auto-Lock Black/Silver ANSI Carabiner

Dimension	300090		300091		300092		300093		300094		300095		300096	
	mm	in	mm	in	mm	in	mm	in	mm	in	mm	in	mm	in
	76.5	3.01	76.5	3.01	76.5	3.01	62	2.44	62	2.44	65	2.56	65	2.56
	114	4.49	114	4.49	114	4.49	110	4.33	110	4.33	108	4.25	108	4.25
	26	1.02	26	1.02	25	0.98	21	0.78	20	0.78	18	0.71	19	0.75

Weight	300090		300091		300092		300093		300094		300095		300096	
	g	oz	g	oz	g	oz	g	oz	g	oz	g	oz	g	oz
	240	8.5	240	8.5	265	9.3	205	7.2	220	7.8	230	8.1	215	7.6

Strength	300090		300091		300092		300093		300094		300095		300096	
	kN	lbf	kN	lbf	kN	lbf	kN	lbf	kN	lbf	kN	lbf	kN	lbf
	50	11240	50	11240	50	11240	40	8992	40	8992	40	8992	40	8992
	18	4047	18	4047	18	4047	12	2698	12	2698	12	2698	12	2698
	16	3597	16	3597	20	4496	16	3597	20	4496	16	3597	16	3597
	\	\	\	\	16	3597	\	\	16	3597	16	3597	\	\
	\	\	\	\	16	3597	\	\	16	3597	16	3597	\	\

Find the latest version this manual at cmcpro.com

GENERAL USE (G)
NFPA 1983 (2017 ED)
ANSI Z359.12 (19)

CMC PROSTEEL CARABINERS
CMC/KONG DNA CARABINERS



Product No. 300090
CMC ProSteel Screw-Lock D Black/Bronze Carabiner

⚠ WARNINGS

Activities involving the use of this equipment are potentially dangerous. Special knowledge and training are required to use this product. You are responsible for your own actions and decisions. Before using this device, you must:

- Read and understand these user instructions and warnings.
- Familiarize yourself with its capabilities and limitations.
- Be a competent person and/or get specific training in its proper use, or be under the direct supervision of a trained or otherwise competent person.
- Understand and accept the risks involved.

FAILURE TO HEED ANY OF THESE WARNINGS MAY RESULT IN SEVERE INJURY OR DEATH.



MEETS THE CARABINER REQUIREMENTS OF NFPA 1983, STANDARD ON LIFE SAFETY ROPE AND EQUIPMENT FOR EMERGENCY SERVICES, 2017 EDITION.

EMERGENCY SERVICES CARABINER IN ACCORDANCE WITH NFPA 1983 - 2017.

- 300090 CMC PROSTEEL SCREW-LOCK D BLACK/BRONZE CARABINER, GENERAL USE (G) MBS 50 KN (11,240 LBF)
- 300091 CMC PROSTEEL SCREW-LOCK D BLACK/BLACK CARABINER, GENERAL USE (G) MBS 50 KN (11,240 LBF)
- 300092 CMC PROSTEEL AUTO-LOCK D BLACK/SILVER ANSI CARABINER, GENERAL USE (G) MBS 50 KN (11,240 LBF)
- 300093 CMC PROSTEEL SCREW-LOCK OVAL BLACK/BRONZE CARABINER, GENERAL USE (G) MBS 40 KN (8,992 LBF)
- 300094 CMC PROSTEEL AUTO-LOCK OVAL BLACK/SILVER ANSI CARABINER, GENERAL USE (G) MBS 40 KN (8,992 LBF)
- 300096 CMC/KONG DNA AUTO-LOCK BLACK/SILVER CARABINER, GENERAL USE (G) MBS 40 KN (8,992 LBF)

MEETS THE REQUIREMENTS OF ANSI Z359.12:2019: CONNECTING COMPONENTS FOR PERSONAL FALL ARREST SYSTEMS.

- 300092 CMC PROSTEEL AUTO-LOCK D BLACK/SILVER ANSI CARABINER
- 300094 CMC PROSTEEL AUTO-LOCK OVAL BLACK/SILVER ANSI CARABINER
- 300095 CMC/KONG DNA AUTO-LOCK BLACK/SILVER ANSI CARABINER

The compliance of conformity to ANSI Z359.12:2019 performed by the following the notified bodies:

- n° 0123 - TÜV SÜD Product Service GmbH Daimlerstraße 11 - 85748 Garching – Germany (300392 & 300394)
- n° 2008 DOLOMICERT scarl - zona industriale Villanova – 32013 Longarone (BL) – Italia (300395)

USER INFORMATION

User Information shall be provided to the user of the product. NFPA Standard 1983 recommends separating the User Information from the equipment and retaining the information in a permanent record. The standard also recommends making a copy of the User Information to keep with the equipment and that the information should be referred to before and after each use. Additional information regarding life safety equipment can be found in NFPA 1500, Standard on Fire Department Occupational Safety, Health, and Wellness Program, and NFPA 1858, Standard on Selection, Care, and Maintenance of Life Safety Rope and Equipment for Emergency Services and the ANSI Z359 series of Fall Protection standards.

INSPECTION

Inspect the equipment according to your department's policy for inspecting life safety equipment. Inspect the equipment prior to entry into service, after each use, and at least once every 12 months. The equipment should be thoroughly inspected by an inspector that meets your department's training standard for inspection of life safety equipment. Keep a record of the date, person performing the inspection and results, as well as the date of first use, name of users and any other pertinent information necessary to keep accurate track of the equipment's usage history in the equipment log or on a tag that attaches to the equipment. Each user should be trained in equipment inspection and should inspect the equipment before each use. Inspect the equipment for cracks, sharp edges, dents, corrosion, burrs or excessive wear. Minor nicks or sharp spots may be smoothed with an emery cloth. If any of the above is noted, or if the equipment has been subjected to shock loads, fall loads, or abuse other than normal use, remove the equipment from service and destroy it. If there is any doubt about the service ability of the equipment, remove the equipment from service and destroy it. The service life of equipment depends greatly on the type of use and the environment of use. Because these factors vary greatly, a precise service life of the equipment cannot be provided.

LIMITATIONS AND PROPER USE

All carabiners are designed to specific performance criteria. Be aware of load limitations, manner used, and proper technique. Do not overload a carabiner. Carabiners can fail under improper use conditions such as cross loading, gate open loading, loading other than major axis, applying a shear or torsional load to the carabiner, etc. If you are not sure of proper application or technique, seek proper training in carabiner use and technical rope application.

COMPATIBILITY

300092, 300094, and 300095 are connecting components in accordance with ANSI/ASSP Z359.12-2019, used to connect two or more pieces of equipment together in Personal Fall Arrest Systems. Ensure compatibility with other components in the fall protection system.

CARRYING, MAINTENANCE & STORAGE

Clean and dry this equipment after each use to remove any dust, debris and moisture. During use, carrying and storage keep the equipment away from acids, alkalis, rust and strong chemicals. Do not expose the equipment to flame or high temperatures. Store in a cool, dry location. Do not store where the equipment may be exposed to moist air, particularly where dissimilar metals are stored together.

MATERIALS

Connector Materials:

- **Frame and Gate:** Carbon Steel
- **Additional Components (varies per model):** Steel, Bronze, Stainless Steel, Delrin

REPAIR

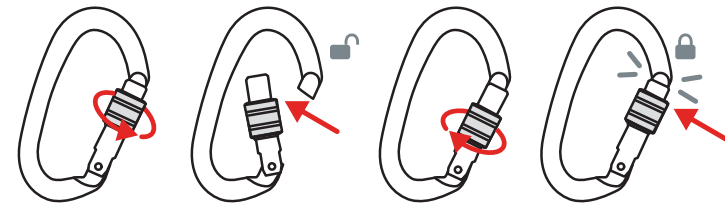
All repair work shall be performed by the manufacturer. All other work or modifications void the warranty and releases CMC/KONG from all liability and responsibility as the manufacturer.

SAMPLE LOG

The sample log suggests records that should be maintained by the purchaser or user of life safety equipment.

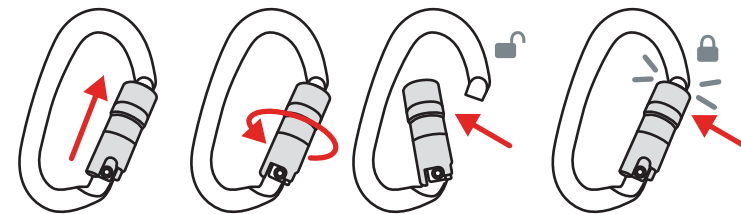
Equipment Inspection and Maintenance Log			
Item #	Date in Service		
Brand/Model	Strength		
Date	How Used or Maintained	Comments	Name

Screw-Lock Use



(1)Unscrew gate to unlock (2)Push gate in to open (3)Screw gate to close (4)Confirm gate locking

Auto-Lock Use



(1)Push gate up (2)Twist gate to unlock (3)Push Gate in to open (4)Release Gate to Lock (5)Confirm Gate Locking

⚠ Do not use if gate fails to lock or open properly.



CMC Rescue, Inc.
6740 Cortona Drive, Goleta, CA 93117, USA
805-562-9120 / 800-235-5741
cmcpro.com
ISO 9001 Certified
©2021 CMC Rescue, Inc. All rights reserved
CMC and **XC** are registered marks of CMC Rescue Inc.
CMC Control No.: 300091ML_Rev00

NFPA 1983 (2017 ED) "G"	NFPA 1983 (2017 ED) "G" AND ANSI Z359.12 (19)	ANSI Z359.12 (19)
 300090 CMC ProSteel Screw-Lock D Black/ Bronze Carabiner	 300091 CMC ProSteel Screw-Lock D Black/ Black Carabiner	 300092 CMC ProSteel Auto-Lock D Black/Silver ANSI Carabiner
 300093 CMC ProSteel Screw-Lock Oval Black/ Bronze Carabiner	 300096 CMC/Kong DNA Auto-Lock Black/Silver Carabiner	 300094 CMC ProSteel Auto-Lock Oval Black/ Silver ANSI Carabiner
		 300095 CMC/Kong DNA Auto-Lock Black/Silver ANSI Carabiner

Dimension	300090		300091		300092		300093		300094		300095		300096	
	mm	in	mm	in	mm	in	mm	in	mm	in	mm	in	mm	in
	76.5	3.01	76.5	3.01	76.5	3.01	62	2.44	62	2.44	65	2.56	65	2.56
	114	4.49	114	4.49	114	4.49	110	4.33	110	4.33	108	4.25	108	4.25
	26	1.02	26	1.02	25	0.98	21	0.78	20	0.78	18	0.71	19	0.75

Weight	300090		300091		300092		300093		300094		300095		300096	
	g	oz	g	oz	g	oz	g	oz	g	oz	g	oz	g	oz
	240	8.5	240	8.5	265	9.3	205	7.2	220	7.8	230	8.1	215	7.6

Strength	300090		300091		300092		300093		300094		300095		300096	
	kN	lbf	kN	lbf	kN	lbf	kN	lbf	kN	lbf	kN	lbf	kN	lbf
	50	11240	50	11240	50	11240	40	8992	40	8992	40	8992	40	8992
	18	4047	18	4047	18	4047	12	2698	12	2698	12	2698	12	2698
	16	3597	16	3597	20	4496	16	3597	20	4496	16	3597	16	3597
	\	\	\	\	16	3597	\	\	16	3597	16	3597	\	\
	\	\	\	\	16	3597	\	\	16	3597	16	3597	\	\

Find the latest version this manual at cmcpro.com

GENERAL USE (G)
NFPA 1983 (2017 ED) | ANSI Z359.12 (19)

CMC PROSTEEL CARABINERS
CMC/KONG DNA CARABINERS



Product No. 300091
CMC ProSteel Screw-Lock D Black/Black Carabiner

⚠ WARNINGS

Activities involving the use of this equipment are potentially dangerous. Special knowledge and training are required to use this product. You are responsible for your own actions and decisions. Before using this device, you must:

- Read and understand these user instructions and warnings.
- Familiarize yourself with its capabilities and limitations.
- Be a competent person and/or get specific training in its proper use, or be under the direct supervision of a trained or otherwise competent person.
- Understand and accept the risks involved.

FAILURE TO HEED ANY OF THESE WARNINGS MAY RESULT IN SEVERE INJURY OR DEATH.



MEETS THE CARABINER REQUIREMENTS OF NFPA 1983, STANDARD ON LIFE SAFETY ROPE AND EQUIPMENT FOR EMERGENCY SERVICES, 2017 EDITION.

EMERGENCY SERVICES CARABINER IN ACCORDANCE WITH NFPA 1983 - 2017.

- 300090 CMC PROSTEEL SCREW-LOCK D BLACK/BRONZE CARABINER, GENERAL USE (G) MBS 50 KN (11,240 LBF)
- 300091 CMC PROSTEEL SCREW-LOCK D BLACK/BLACK CARABINER, GENERAL USE (G) MBS 50 KN (11,240 LBF)
- 300092 CMC PROSTEEL AUTO-LOCK D BLACK/SILVER ANSI CARABINER, GENERAL USE (G) MBS 50 KN (11,240 LBF)
- 300093 CMC PROSTEEL SCREW-LOCK OVAL BLACK/BRONZE CARABINER, GENERAL USE (G) MBS 40 KN (8,992 LBF)
- 300094 CMC PROSTEEL AUTO-LOCK OVAL BLACK/SILVER ANSI CARABINER, GENERAL USE (G) MBS 40 KN (8,992 LBF)
- 300096 CMC/KONG DNA AUTO-LOCK BLACK/SILVER CARABINER, GENERAL USE (G) MBS 40 KN (8,992 LBF)

MEETS THE REQUIREMENTS OF ANSI Z359.12:2019: CONNECTING COMPONENTS FOR PERSONAL FALL ARREST SYSTEMS.

- 300092 CMC PROSTEEL AUTO-LOCK D BLACK/SILVER ANSI CARABINER
- 300094 CMC PROSTEEL AUTO-LOCK OVAL BLACK/SILVER ANSI CARABINER
- 300095 CMC/KONG DNA AUTO-LOCK BLACK/SILVER ANSI CARABINER

The compliance of conformity to ANSI Z359.12:2019 performed by the following the notified bodies:

- n° 0123 - TÜV SÜD Product Service GmbH Daimlerstraße 11 - 85748 Garching – Germany (300392 & 300394)
- n° 2008 DLOMITICERT scarl - zona industriale Villanova – 32013 Longarone (BL) – Italia (300395)

USER INFORMATION

User Information shall be provided to the user of the product. NFPA Standard 1983 recommends separating the User Information from the equipment and retaining the information in a permanent record. The standard also recommends making a copy of the User Information to keep with the equipment and that the information should be referred to before and after each use. Additional information regarding life safety equipment can be found in NFPA 1500, Standard on Fire Department Occupational Safety, Health, and Wellness Program, and NFPA 1858, Standard on Selection, Care, and Maintenance of Life Safety Rope and Equipment for Emergency Services and the ANSI Z359 series of Fall Protection standards.

INSPECTION

Inspect the equipment according to your department's policy for inspecting life safety equipment. Inspect the equipment prior to entry into service, after each use, and at least once every 12 months. The equipment should be thoroughly inspected by an inspector that meets your department's training standard for inspection of life safety equipment. Keep a record of the date, person performing the inspection and results, as well as the date of first use, name of users and any other pertinent information necessary to keep accurate track of the equipment's usage history in the equipment log or on a tag that attaches to the equipment. Each user should be trained in equipment inspection and should inspect the equipment before each use. Inspect the equipment for cracks, sharp edges, dents, corrosion, burrs or excessive wear. Minor nicks or sharp spots may be smoothed with an emery cloth. If any of the above is noted, or if the equipment has been subjected to shock loads, fall loads, or abuse other than normal use, remove the equipment from service and destroy it. If there is any doubt about the service ability of the equipment, remove the equipment from service and destroy it. The service life of equipment depends greatly on the type of use and the environment of use. Because these factors vary greatly, a precise service life of the equipment cannot be provided.

LIMITATIONS AND PROPER USE

All carabiners are designed to specific performance criteria. Be aware of load limitations, manner used, and proper technique. Do not overload a carabiner. Carabiners can fail under improper use conditions such as cross loading, gate open loading, loading other than major axis, applying a shear or torsional load to the carabiner, etc. If you are not sure of proper application or technique, seek proper training in carabiner use and technical rope application.

COMPATIBILITY

300092, 300094, and 300095 are connecting components in accordance with ANSI/ASSP Z359.12-2019, used to connect two or more pieces of equipment together in Personal Fall Arrest Systems. Ensure compatibility with other components in the fall protection system.

CARRYING, MAINTENANCE & STORAGE

Clean and dry this equipment after each use to remove any dust, debris and moisture. During use, carrying and storage keep the equipment away from acids, alkalis, rust and strong chemicals. Do not expose the equipment to flame or high temperatures. Store in a cool, dry location. Do not store where the equipment may be exposed to moist air, particularly where dissimilar metals are stored together.

MATERIALS

Connector Materials:

- **Frame and Gate:** Carbon Steel
- **Additional Components (varies per model):** Steel, Bronze, Stainless Steel, Delrin

REPAIR

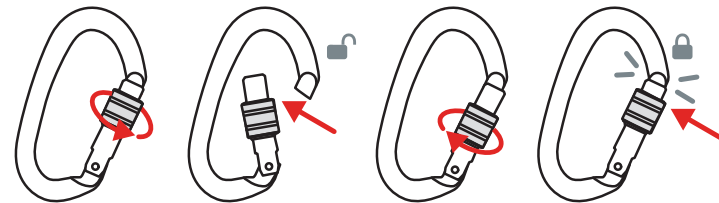
All repair work shall be performed by the manufacturer. All other work or modifications void the warranty and releases CMC/KONG from all liability and responsibility as the manufacturer.

SAMPLE LOG

The sample log suggests records that should be maintained by the purchaser or user of life safety equipment.

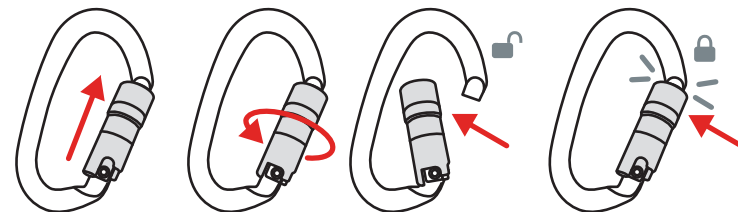
Equipment Inspection and Maintenance Log			
Item #	Date in Service	Brand/Model	Strength
Date	How Used or Maintained	Comments	Name

Screw-Lock Use



(1) Unscrew gate to unlock (2) Push gate in to open (3) Screw gate to close (4) Confirm gate locking

Auto-Lock Use



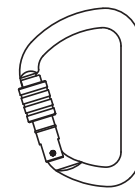
(1) Push gate up (2) Twist gate to unlock (3) Push Gate in to open (4) Release Gate to Lock (5) Confirm Gate Locking

⚠ Do not use if gate fails to lock or open properly.

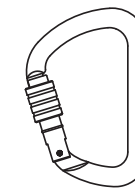


CMC Rescue, Inc.
6740 Cortona Drive, Goleta, CA 93117, USA
805-562-9120 / 800-235-5741
cmcpro.com
ISO 9001 Certified
©2021 CMC Rescue, Inc. All rights reserved
CMC and **XC** are registered marks of CMC Rescue Inc.
CMC Control No.: 300092ML_Rev00

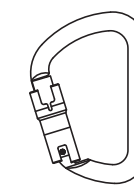
NFPA 1983 (2017 ED) "G"



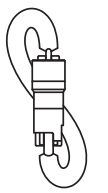
300090
CMC ProSteel Screw-Lock D Black/
Bronze Carabiner



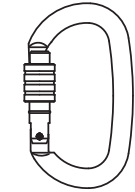
300091
CMC ProSteel Screw-Lock D Black/
Black Carabiner



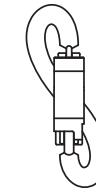
300092
CMC ProSteel Auto-Lock D Black/Silver
ANSI Carabiner



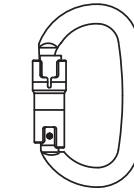
300095
CMC/Kong DNA Auto-Lock Black/Silver
ANSI Carabiner



300093
CMC ProSteel Screw-Lock Oval Black/
Bronze Carabiner



300096
CMC/Kong DNA Auto-Lock Black/Silver
Carabiner



300094
CMC ProSteel Auto-Lock Oval Black/
Silver ANSI Carabiner

NFPA 1983 (2017 ED) "G" AND ANSI Z359.12 (19)

ANSI Z359.12 (19)

Dimension	300090		300091		300092		300093		300094		300095		300096	
	mm	in	mm	in	mm	in	mm	in	mm	in	mm	in	mm	in
	76.5	3.01	76.5	3.01	76.5	3.01	62	2.44	62	2.44	65	2.56	65	2.56
	114	4.49	114	4.49	114	4.49	110	4.33	110	4.33	108	4.25	108	4.25
	26	1.02	26	1.02	25	0.98	21	0.78	20	0.78	18	0.71	19	0.75

Weight	300090		300091		300092		300093		300094		300095		300096	
	g	oz	g	oz	g	oz	g	oz	g	oz	g	oz	g	oz
	240	8.5	240	8.5	265	9.3	205	7.2	220	7.8	230	8.1	215	7.6

Strength	300090		300091		300092		300093		300094		300095		300096	
	kN	lbf	kN	lbf	kN	lbf	kN	lbf	kN	lbf	kN	lbf	kN	lbf
	50	11240	50	11240	50	11240	40	8992	40	8992	40	8992	40	8992
	18	4047	18	4047	18	4047	12	2698	12	2698	12	2698	12	2698
	16	3597	16	3597	20	4496	16	3597	20	4496	16	3597	16	3597
	\	\	\	\	16	3597	\	\	16	3597	16	3597	\	\
	\	\	\	\	16	3597	\	\	16	3597	16	3597	\	\

Find the latest version this manual at cmcpro.com

GENERAL USE (G)
NFPA 1983 (2017 ED)
ANSI Z359.12 (19)

CMC PROSTEEL CARABINERS
CMC/KONG DNA CARABINERS

CMC



Product No. 300092

CMC ProSteel Auto-Lock D Black/Silver ANSI Carabiner

⚠ WARNINGS

Activities involving the use of this equipment are potentially dangerous. Special knowledge and training are required to use this product. You are responsible for your own actions and decisions. Before using this device, you must:

- Read and understand these user instructions and warnings.
- Familiarize yourself with its capabilities and limitations.
- Be a competent person and/or get specific training in its proper use, or be under the direct supervision of a trained or otherwise competent person.
- Understand and accept the risks involved.

FAILURE TO HEED ANY OF THESE WARNINGS MAY RESULT IN SEVERE INJURY OR DEATH.



MEETS THE CARABINER REQUIREMENTS OF NFPA 1983, STANDARD ON LIFE SAFETY ROPE AND EQUIPMENT FOR EMERGENCY SERVICES, 2017 EDITION.

EMERGENCY SERVICES CARABINER IN ACCORDANCE WITH NFPA 1983 - 2017.

- 300090 CMC PROSTEEL SCREW-LOCK D BLACK/BRONZE CARABINER, GENERAL USE (G) MBS 50 KN (11,240 LBF)
- 300091 CMC PROSTEEL SCREW-LOCK D BLACK/BLACK CARABINER, GENERAL USE (G) MBS 50 KN (11,240 LBF)
- 300092 CMC PROSTEEL AUTO-LOCK D BLACK/SILVER ANSI CARABINER, GENERAL USE (G) MBS 50 KN (11,240 LBF)
- 300093 CMC PROSTEEL SCREW-LOCK OVAL BLACK/BRONZE CARABINER, GENERAL USE (G) MBS 40 KN (8,992 LBF)
- 300094 CMC PROSTEEL AUTO-LOCK OVAL BLACK/SILVER ANSI CARABINER, GENERAL USE (G) MBS 40 KN (8,992 LBF)
- 300096 CMC/KONG DNA AUTO-LOCK BLACK/SILVER CARABINER, GENERAL USE (G) MBS 40 KN (8,992 LBF)

MEETS THE REQUIREMENTS OF ANSI Z359.12:2019: CONNECTING COMPONENTS FOR PERSONAL FALL ARREST SYSTEMS.

- 300092 CMC PROSTEEL AUTO-LOCK D BLACK/SILVER ANSI CARABINER
- 300094 CMC PROSTEEL AUTO-LOCK OVAL BLACK/SILVER ANSI CARABINER
- 300095 CMC/KONG DNA AUTO-LOCK BLACK/SILVER ANSI CARABINER

The compliance of conformity to ANSI Z359.12:2019 performed by the following the notified bodies:

- n° 0123 - TÜV SÜD Product Service GmbH Daimlerstraße 11 - 85748 Garching – Germany (300392 & 300394)
- n° 2008 DOLOMICERT scarl - zona industriale Villanova – 32013 Longarone (BL) – Italia (300395)

USER INFORMATION

User Information shall be provided to the user of the product. NFPA Standard 1983 recommends separating the User Information from the equipment and retaining the information in a permanent record. The standard also recommends making a copy of the User Information to keep with the equipment and that the information should be referred to before and after each use. Additional information regarding life safety equipment can be found in NFPA 1500, Standard on Fire Department Occupational Safety, Health, and Wellness Program, and NFPA 1858, Standard on Selection, Care, and Maintenance of Life Safety Rope and Equipment for Emergency Services and the ANSI Z359 series of Fall Protection standards.

INSPECTION

Inspect the equipment according to your department's policy for inspecting life safety equipment. Inspect the equipment prior to entry into service, after each use, and at least once every 12 months. The equipment should be thoroughly inspected by an inspector that meets your department's training standard for inspection of life safety equipment. Keep a record of the date, person performing the inspection and results, as well as the date of first use, name of users and any other pertinent information necessary to keep accurate track of the equipment's usage history in the equipment log or on a tag that attaches to the equipment. Each user should be trained in equipment inspection and should inspect the equipment before each use. Inspect the equipment for cracks, sharp edges, dents, corrosion, burrs or excessive wear. Minor nicks or sharp spots may be smoothed with an emery cloth. If any of the above is noted, or if the equipment has been subjected to shock loads, fall loads, or abuse other than normal use, remove the equipment from service and destroy it. If there is any doubt about the service ability of the equipment, remove the equipment from service and destroy it. The service life of equipment depends greatly on the type of use and the environment of use. Because these factors vary greatly, a precise service life of the equipment cannot be provided.

LIMITATIONS AND PROPER USE

All carabiners are designed to specific performance criteria. Be aware of load limitations, manner used, and proper technique. Do not overload a carabiner. Carabiners can fail under improper use conditions such as cross loading, gate open loading, loading other than major axis, applying a shear or torsional load to the carabiner, etc. If you are not sure of proper application or technique, seek proper training in carabiner use and technical rope application.

COMPATIBILITY

300092, 300094, and 300095 are connecting components in accordance with ANSI/ASSP Z359.12-2019, used to connect two or more pieces of equipment together in Personal Fall Arrest Systems. Ensure compatibility with other components in the fall protection system.

CARRYING, MAINTENANCE & STORAGE

Clean and dry this equipment after each use to remove any dust, debris and moisture. During use, carrying and storage keep the equipment away from acids, alkalis, rust and strong chemicals. Do not expose the equipment to flame or high temperatures. Store in a cool, dry location. Do not store where the equipment may be exposed to moist air, particularly where dissimilar metals are stored together.

MATERIALS

Connector Materials:

- **Frame and Gate:** Carbon Steel
- **Additional Components (varies per model):** Steel, Bronze, Stainless Steel, Delrin

REPAIR

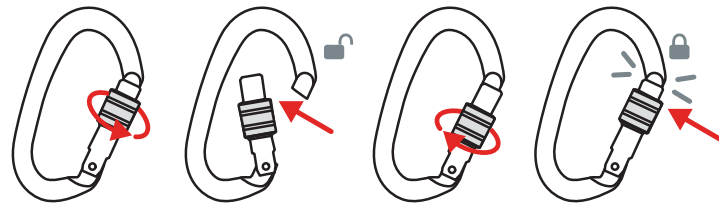
All repair work shall be performed by the manufacturer. All other work or modifications void the warranty and releases CMC/KONG from all liability and responsibility as the manufacturer.

SAMPLE LOG

The sample log suggests records that should be maintained by the purchaser or user of life safety equipment.

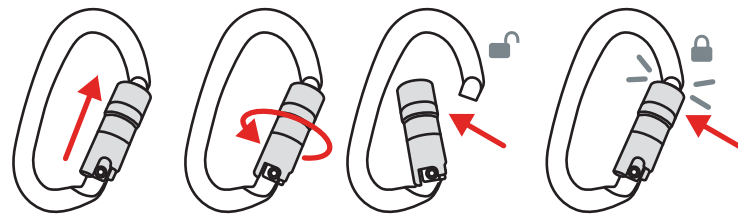
Equipment Inspection and Maintenance Log			
Item #	Date in Service		
Brand/Model	Strength		
Date	How Used or Maintained	Comments	Name

Screw-Lock Use



(1)Unscrew gate to unlock (2)Push gate in to open (3)Screw gate to close (4)Confirm gate locking

Auto-Lock Use



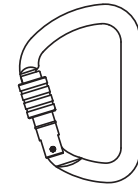
(1)Push gate up (2)Twist gate to unlock (3)Push Gate in to open (4)Release Gate to Lock (5)Confirm Gate Locking

⚠ Do not use if gate fails to lock or open properly.

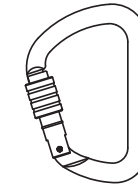


CMC Rescue, Inc.
6740 Cortona Drive, Goleta, CA 93117, USA
805-562-9120 / 800-235-5741
cmcpro.com
ISO 9001 Certified
©2021 CMC Rescue, Inc. All rights reserved
CMC and **XC** are registered marks of CMC Rescue Inc.
CMC Control No.: 300093ML_Rev00

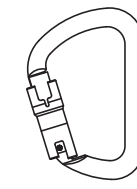
NFPA 1983 (2017 ED) "G"



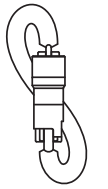
300090
CMC ProSteel Screw-Lock D Black/
Bronze Carabiner



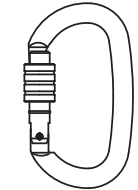
300091
CMC ProSteel Screw-Lock D Black/
Black Carabiner



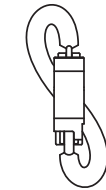
300092
CMC ProSteel Auto-Lock D Black/Silver
ANSI Carabiner



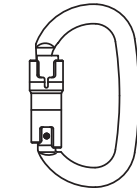
300095
CMC/Kong DNA Auto-Lock Black/Silver
ANSI Carabiner



300093
CMC ProSteel Screw-Lock Oval Black/
Bronze Carabiner



300096
CMC/Kong DNA Auto-Lock Black/Silver
Carabiner



300094
CMC ProSteel Auto-Lock Oval Black/
Silver ANSI Carabiner

NFPA 1983 (2017 ED) "G" AND ANSI Z359.12 (19)

ANSI Z359.12 (19)

Dimension	300090		300091		300092		300093		300094		300095		300096	
	mm	in	mm	in	mm	in	mm	in	mm	in	mm	in	mm	in
	76.5	3.01	76.5	3.01	76.5	3.01	62	2.44	62	2.44	65	2.56	65	2.56
	114	4.49	114	4.49	114	4.49	110	4.33	110	4.33	108	4.25	108	4.25
	26	1.02	26	1.02	25	0.98	21	0.78	20	0.78	18	0.71	19	0.75

Weight	300090		300091		300092		300093		300094		300095		300096	
	g	oz	g	oz	g	oz	g	oz	g	oz	g	oz	g	oz
	240	8.5	240	8.5	265	9.3	205	7.2	220	7.8	230	8.1	215	7.6

Strength	300090		300091		300092		300093		300094		300095		300096	
	kN	lbf	kN	lbf	kN	lbf	kN	lbf	kN	lbf	kN	lbf	kN	lbf
	50	11240	50	11240	50	11240	40	8992	40	8992	40	8992	40	8992
	18	4047	18	4047	18	4047	12	2698	12	2698	12	2698	12	2698
	16	3597	16	3597	20	4496	16	3597	20	4496	16	3597	16	3597
	\	\	\	\	16	3597	\	\	16	3597	16	3597	\	\
	\	\	\	\	16	3597	\	\	16	3597	16	3597	\	\

Find the latest version this manual at cmcpro.com

GENERAL USE (G)
NFPA 1983 (2017 ED)
ANSI Z359.12 (19)

CMC PROSTEEL CARABINERS
CMC/KONG DNA CARABINERS



Product No. 300093

CMC ProSteel Screw-Lock Oval Black/Bronze Carabiner

⚠ WARNINGS

Activities involving the use of this equipment are potentially dangerous. Special knowledge and training are required to use this product. You are responsible for your own actions and decisions. Before using this device, you must:

- Read and understand these user instructions and warnings.
- Familiarize yourself with its capabilities and limitations.
- Be a competent person and/or get specific training in its proper use, or be under the direct supervision of a trained or otherwise competent person.
- Understand and accept the risks involved.

FAILURE TO HEED ANY OF THESE WARNINGS MAY RESULT IN SEVERE INJURY OR DEATH.



MEETS THE CARABINER REQUIREMENTS OF NFPA 1983, STANDARD ON LIFE SAFETY ROPE AND EQUIPMENT FOR EMERGENCY SERVICES, 2017 EDITION.

EMERGENCY SERVICES CARABINER IN ACCORDANCE WITH NFPA 1983 - 2017.

- 300090 CMC PROSTEEL SCREW-LOCK D BLACK/BRONZE CARABINER, GENERAL USE (G) MBS 50 KN (11,240 LBF)
- 300091 CMC PROSTEEL SCREW-LOCK D BLACK/BLACK CARABINER, GENERAL USE (G) MBS 50 KN (11,240 LBF)
- 300092 CMC PROSTEEL AUTO-LOCK D BLACK/SILVER ANSI CARABINER, GENERAL USE (G) MBS 50 KN (11,240 LBF)
- 300093 CMC PROSTEEL SCREW-LOCK OVAL BLACK/BRONZE CARABINER, GENERAL USE (G) MBS 40 KN (8,992 LBF)
- 300094 CMC PROSTEEL AUTO-LOCK OVAL BLACK/SILVER ANSI CARABINER, GENERAL USE (G) MBS 40 KN (8,992 LBF)
- 300096 CMC/KONG DNA AUTO-LOCK BLACK/SILVER CARABINER, GENERAL USE (G) MBS 40 KN (8,992 LBF)

MEETS THE REQUIREMENTS OF ANSI Z359.12:2019: CONNECTING COMPONENTS FOR PERSONAL FALL ARREST SYSTEMS.

- 300092 CMC PROSTEEL AUTO-LOCK D BLACK/SILVER ANSI CARABINER
- 300094 CMC PROSTEEL AUTO-LOCK OVAL BLACK/SILVER ANSI CARABINER
- 300095 CMC/KONG DNA AUTO-LOCK BLACK/SILVER ANSI CARABINER

The compliance of conformity to ANSI Z359.12:2019 performed by the following the notified bodies:

- n° 0123 - TÜV SÜD Product Service GmbH Daimlerstraße 11 - 85748 Garching – Germany (300392 & 300394)
- n° 2008 DOLIMITICERT scarl - zona industriale Villanova – 32013 Longarone (BL) – Italia (300395)

USER INFORMATION

User Information shall be provided to the user of the product. NFPA Standard 1983 recommends separating the User Information from the equipment and retaining the information in a permanent record. The standard also recommends making a copy of the User Information to keep with the equipment and that the information should be referred to before and after each use. Additional information regarding life safety equipment can be found in NFPA 1500, Standard on Fire Department Occupational Safety, Health, and Wellness Program, and NFPA 1858, Standard on Selection, Care, and Maintenance of Life Safety Rope and Equipment for Emergency Services and the ANSI Z359 series of Fall Protection standards.

INSPECTION

Inspect the equipment according to your department's policy for inspecting life safety equipment. Inspect the equipment prior to entry into service, after each use, and at least once every 12 months. The equipment should be thoroughly inspected by an inspector that meets your department's training standard for inspection of life safety equipment. Keep a record of the date, person performing the inspection and results, as well as the date of first use, name of users and any other pertinent information necessary to keep accurate track of the equipment's usage history in the equipment log or on a tag that attaches to the equipment. Each user should be trained in equipment inspection and should inspect the equipment before each use. Inspect the equipment for cracks, sharp edges, dents, corrosion, burrs or excessive wear. Minor nicks or sharp spots may be smoothed with an emery cloth. If any of the above is noted, or if the equipment has been subjected to shock loads, fall loads, or abuse other than normal use, remove the equipment from service and destroy it. If there is any doubt about the service ability of the equipment, remove the equipment from service and destroy it. The service life of equipment depends greatly on the type of use and the environment of use. Because these factors vary greatly, a precise service life of the equipment cannot be provided.

LIMITATIONS AND PROPER USE

All carabiners are designed to specific performance criteria. Be aware of load limitations, manner used, and proper technique. Do not overload a carabiner. Carabiners can fail under improper use conditions such as cross loading, gate open loading, loading other than major axis, applying a shear or torsional load to the carabiner, etc. If you are not sure of proper application or technique, seek proper training in carabiner use and technical rope application.

COMPATIBILITY

300092, 300094, and 300095 are connecting components in accordance with ANSI/ASSP Z359.12-2019, used to connect two or more pieces of equipment together in Personal Fall Arrest Systems. Ensure compatibility with other components in the fall protection system.

CARRYING, MAINTENANCE & STORAGE

Clean and dry this equipment after each use to remove any dust, debris and moisture. During use, carrying and storage keep the equipment away from acids, alkalis, rust and strong chemicals. Do not expose the equipment to flame or high temperatures. Store in a cool, dry location. Do not store where the equipment may be exposed to moist air, particularly where dissimilar metals are stored together.

MATERIALS

Connector Materials:

- **Frame and Gate:** Carbon Steel
- **Additional Components (varies per model):** Steel, Bronze, Stainless Steel, Delrin

REPAIR

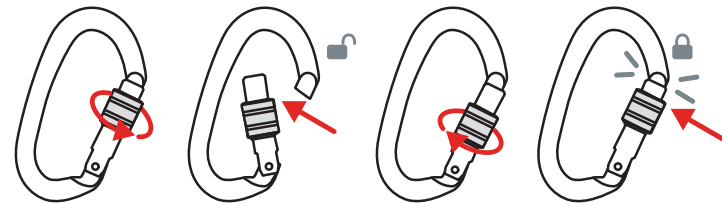
All repair work shall be performed by the manufacturer. All other work or modifications void the warranty and releases CMC/KONG from all liability and responsibility as the manufacturer.

SAMPLE LOG

The sample log suggests records that should be maintained by the purchaser or user of life safety equipment.

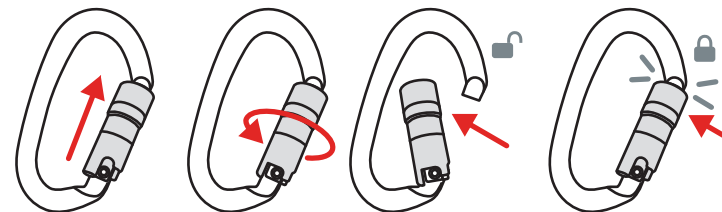
Equipment Inspection and Maintenance Log			
Item #	Date in Service		
Brand/Model	Strength		
Date	How Used or Maintained	Comments	Name

Screw-Lock Use



(1)Unscrew gate to unlock (2)Push gate in to open (3)Screw gate to close (4)Confirm gate locking

Auto-Lock Use



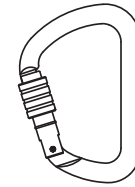
(1)Push gate up (2)Twist gate to unlock (3)Push Gate in to open (4)Release Gate to Lock (5)Confirm Gate Locking

⚠ Do not use if gate fails to lock or open properly.

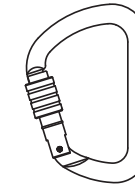


CMC Rescue, Inc.
6740 Cortona Drive, Goleta, CA 93117, USA
805-562-9120 / 800-235-5741
cmcpro.com
ISO 9001 Certified
©2021 CMC Rescue, Inc. All rights reserved
CMC and **XC** are registered marks of CMC Rescue Inc.
CMC Control No.: 300094ML_Rev00

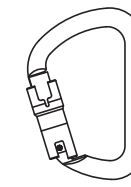
NFPA 1983 (2017 ED) "G"



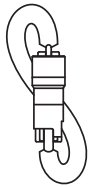
300090
CMC ProSteel Screw-Lock D Black/
Bronze Carabiner



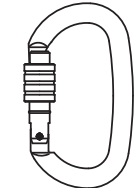
300091
CMC ProSteel Screw-Lock D Black/
Black Carabiner



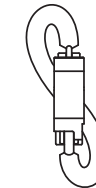
300092
CMC ProSteel Auto-Lock D Black/Silver
ANSI Carabiner



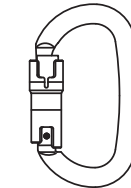
300095
CMC/Kong DNA Auto-Lock Black/Silver
ANSI Carabiner



300093
CMC ProSteel Screw-Lock Oval Black/
Bronze Carabiner



300096
CMC/Kong DNA Auto-Lock Black/Silver
Carabiner



300094
CMC ProSteel Auto-Lock Oval Black/
Silver ANSI Carabiner

NFPA 1983 (2017 ED) "G" AND ANSI Z359.12 (19)

ANSI Z359.12 (19)

Dimension	300090		300091		300092		300093		300094		300095		300096	
	mm	in	mm	in	mm	in	mm	in	mm	in	mm	in	mm	in
	76.5	3.01	76.5	3.01	76.5	3.01	62	2.44	62	2.44	65	2.56	65	2.56
	114	4.49	114	4.49	114	4.49	110	4.33	110	4.33	108	4.25	108	4.25
	26	1.02	26	1.02	25	0.98	21	0.78	20	0.78	18	0.71	19	0.75

Weight	300090		300091		300092		300093		300094		300095		300096	
	g	oz	g	oz	g	oz	g	oz	g	oz	g	oz	g	oz
	240	8.5	240	8.5	265	9.3	205	7.2	220	7.8	230	8.1	215	7.6

Strength	300090		300091		300092		300093		300094		300095		300096	
	kN	lbf	kN	lbf	kN	lbf	kN	lbf	kN	lbf	kN	lbf	kN	lbf
	50	11240	50	11240	50	11240	40	8992	40	8992	40	8992	40	8992
	18	4047	18	4047	18	4047	12	2698	12	2698	12	2698	12	2698
	16	3597	16	3597	20	4496	16	3597	20	4496	16	3597	16	3597
	\	\	\	\	16	3597	\	\	16	3597	16	3597	\	\
	\	\	\	\	16	3597	\	\	16	3597	16	3597	\	\

Find the latest version this manual at cmcpro.com

GENERAL USE (G)
NFPA 1983 (2017 ED)
ANSI Z359.12 (19)

CMC PROSTEEL CARABINERS
CMC/KONG DNA CARABINERS

CMC



Product No. 300094

CMC ProSteel Auto-Lock Oval Black/Silver ANSI Carabiner

⚠ WARNINGS

Activities involving the use of this equipment are potentially dangerous. Special knowledge and training are required to use this product. You are responsible for your own actions and decisions. Before using this device, you must:

- Read and understand these user instructions and warnings.
- Familiarize yourself with its capabilities and limitations.
- Be a competent person and/or get specific training in its proper use, or be under the direct supervision of a trained or otherwise competent person.
- Understand and accept the risks involved.

FAILURE TO HEED ANY OF THESE WARNINGS MAY RESULT IN SEVERE INJURY OR DEATH.



MEETS THE CARABINER REQUIREMENTS OF NFPA 1983, STANDARD ON LIFE SAFETY ROPE AND EQUIPMENT FOR EMERGENCY SERVICES, 2017 EDITION.

EMERGENCY SERVICES CARABINER IN ACCORDANCE WITH NFPA 1983 - 2017.

- 300090 CMC PROSTEEL SCREW-LOCK D BLACK/BRONZE CARABINER, GENERAL USE (G) MBS 50 KN (11,240 LBF)
- 300091 CMC PROSTEEL SCREW-LOCK D BLACK/BLACK CARABINER, GENERAL USE (G) MBS 50 KN (11,240 LBF)
- 300092 CMC PROSTEEL AUTO-LOCK D BLACK/SILVER ANSI CARABINER, GENERAL USE (G) MBS 50 KN (11,240 LBF)
- 300093 CMC PROSTEEL SCREW-LOCK OVAL BLACK/BRONZE CARABINER, GENERAL USE (G) MBS 40 KN (8,992 LBF)
- 300094 CMC PROSTEEL AUTO-LOCK OVAL BLACK/SILVER ANSI CARABINER, GENERAL USE (G) MBS 40 KN (8,992 LBF)
- 300096 CMC/KONG DNA AUTO-LOCK BLACK/SILVER CARABINER, GENERAL USE (G) MBS 40 KN (8,992 LBF)

MEETS THE REQUIREMENTS OF ANSI Z359.12:2019: CONNECTING COMPONENTS FOR PERSONAL FALL ARREST SYSTEMS.

- 300092 CMC PROSTEEL AUTO-LOCK D BLACK/SILVER ANSI CARABINER
- 300094 CMC PROSTEEL AUTO-LOCK OVAL BLACK/SILVER ANSI CARABINER
- 300095 CMC/KONG DNA AUTO-LOCK BLACK/SILVER ANSI CARABINER

The compliance of conformity to ANSI Z359.12:2019 performed by the following the notified bodies:

- n° 0123 - TÜV SÜD Product Service GmbH Daimlerstraße 11 - 85748 Garching – Germany (300392 & 300394)
- n° 2008 DLOMITICERT scarl - zona industriale Villanova – 32013 Longarone (BL) – Italia (300395)

USER INFORMATION

User Information shall be provided to the user of the product. NFPA Standard 1983 recommends separating the User Information from the equipment and retaining the information in a permanent record. The standard also recommends making a copy of the User Information to keep with the equipment and that the information should be referred to before and after each use. Additional information regarding life safety equipment can be found in NFPA 1500, Standard on Fire Department Occupational Safety, Health, and Wellness Program, and NFPA 1858, Standard on Selection, Care, and Maintenance of Life Safety Rope and Equipment for Emergency Services and the ANSI Z359 series of Fall Protection standards.

INSPECTION

Inspect the equipment according to your department's policy for inspecting life safety equipment. Inspect the equipment prior to entry into service, after each use, and at least once every 12 months. The equipment should be thoroughly inspected by an inspector that meets your department's training standard for inspection of life safety equipment. Keep a record of the date, person performing the inspection and results, as well as the date of first use, name of users and any other pertinent information necessary to keep accurate track of the equipment's usage history in the equipment log or on a tag that attaches to the equipment. Each user should be trained in equipment inspection and should inspect the equipment before each use. Inspect the equipment for cracks, sharp edges, dents, corrosion, burrs or excessive wear. Minor nicks or sharp spots may be smoothed with an emery cloth. If any of the above is noted, or if the equipment has been subjected to shock loads, fall loads, or abuse other than normal use, remove the equipment from service and destroy it. If there is any doubt about the service ability of the equipment, remove the equipment from service and destroy it. The service life of equipment depends greatly on the type of use and the environment of use. Because these factors vary greatly, a precise service life of the equipment cannot be provided.

LIMITATIONS AND PROPER USE

All carabiners are designed to specific performance criteria. Be aware of load limitations, manner used, and proper technique. Do not overload a carabiner. Carabiners can fail under improper use conditions such as cross loading, gate open loading, loading other than major axis, applying a shear or torsional load to the carabiner, etc. If you are not sure of proper application or technique, seek proper training in carabiner use and technical rope application.

COMPATIBILITY

300092, 300094, and 300095 are connecting components in accordance with ANSI/ASSP Z359.12-2019, used to connect two or more pieces of equipment together in Personal Fall Arrest Systems. Ensure compatibility with other components in the fall protection system.

CARRYING, MAINTENANCE & STORAGE

Clean and dry this equipment after each use to remove any dust, debris and moisture. During use, carrying and storage keep the equipment away from acids, alkalis, rust and strong chemicals. Do not expose the equipment to flame or high temperatures. Store in a cool, dry location. Do not store where the equipment may be exposed to moist air, particularly where dissimilar metals are stored together.

MATERIALS

Connector Materials:

- **Frame and Gate:** Carbon Steel
- **Additional Components (varies per model):** Steel, Bronze, Stainless Steel, Delrin

REPAIR

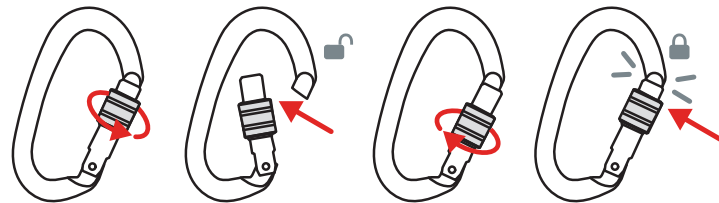
All repair work shall be performed by the manufacturer. All other work or modifications void the warranty and releases CMC/KONG from all liability and responsibility as the manufacturer.

SAMPLE LOG

The sample log suggests records that should be maintained by the purchaser or user of life safety equipment.

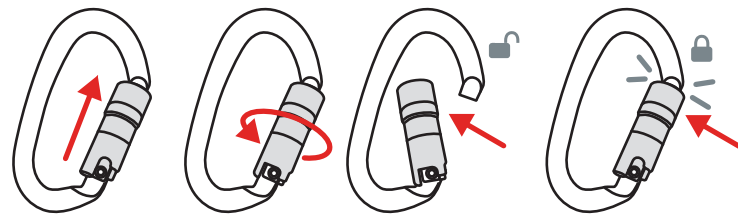
Equipment Inspection and Maintenance Log				
Item #	Date in Service			
Brand/Model	Strength			
Date	How Used or Maintained	Comments	Name	

Screw-Lock Use



(1)Unscrew gate to unlock (2)Push gate in to open (3)Screw gate to close (4)Confirm gate locking

Auto-Lock Use



(1)Push gate up (2)Twist gate to unlock (3)Push Gate in to open (4)Release Gate to Lock (5)Confirm Gate Locking

⚠ Do not use if gate fails to lock or open properly.



CMC Rescue, Inc.
6740 Cortona Drive, Goleta, CA 93117, USA
805-562-9120 / 800-235-5741
cmcpro.com
ISO 9001 Certified
©2021 CMC Rescue, Inc. All rights reserved
CMC and **XC** are registered marks of CMC Rescue Inc.
CMC Control No.: 300095ML_Rev00

NFPA 1983 (2017 ED) "G"		NFPA 1983 (2017 ED) "G" AND ANSI Z359.12 (19)		ANSI Z359.12 (19)	
	300090 CMC ProSteel Screw-Lock D Black/ Bronze Carabiner		300091 CMC ProSteel Screw-Lock D Black/ Black Carabiner		300092 CMC ProSteel Auto-Lock D Black/Silver ANSI Carabiner
	300093 CMC ProSteel Screw-Lock Oval Black/ Bronze Carabiner		300096 CMC/Kong DNA Auto-Lock Black/Silver Carabiner		300094 CMC ProSteel Auto-Lock Oval Black/ Silver ANSI Carabiner
			300095 CMC/Kong DNA Auto-Lock Black/Silver ANSI Carabiner		

Dimension	300090		300091		300092		300093		300094		300095		300096	
	mm	in	mm	in	mm	in	mm	in	mm	in	mm	in	mm	in
	76.5	3.01	76.5	3.01	76.5	3.01	62	2.44	62	2.44	65	2.56	65	2.56
	114	4.49	114	4.49	114	4.49	110	4.33	110	4.33	108	4.25	108	4.25
	26	1.02	26	1.02	25	0.98	21	0.78	20	0.78	18	0.71	19	0.75

Weight	300090		300091		300092		300093		300094		300095		300096	
	g	oz	g	oz	g	oz	g	oz	g	oz	g	oz	g	oz
	240	8.5	240	8.5	265	9.3	205	7.2	220	7.8	230	8.1	215	7.6

Strength	300090		300091		300092		300093		300094		300095		300096	
	kN	lbf	kN	lbf	kN	lbf	kN	lbf	kN	lbf	kN	lbf	kN	lbf
	50	11240	50	11240	50	11240	40	8992	40	8992	40	8992	40	8992
	18	4047	18	4047	18	4047	12	2698	12	2698	12	2698	12	2698
	16	3597	16	3597	20	4496	16	3597	20	4496	16	3597	16	3597
	\	\	\	\	16	3597	\	\	16	3597	16	3597	\	\
	\	\	\	\	16	3597	\	\	16	3597	16	3597	\	\

Find the latest version this manual at cmcpro.com

GENERAL USE (G)
NFPA 1983 (2017 ED)
ANSI Z359.12 (19)

CMC PROSTEEL CARABINERS
CMC/KONG DNA CARABINERS



Product No. 300095
CMC/Kong DNA Auto-Lock Black/Silver ANSI Carabiner

⚠ WARNINGS

Activities involving the use of this equipment are potentially dangerous. Special knowledge and training are required to use this product. You are responsible for your own actions and decisions. Before using this device, you must:

- Read and understand these user instructions and warnings.
- Familiarize yourself with its capabilities and limitations.
- Be a competent person and/or get specific training in its proper use, or be under the direct supervision of a trained or otherwise competent person.
- Understand and accept the risks involved.

FAILURE TO HEED ANY OF THESE WARNINGS MAY RESULT IN SEVERE INJURY OR DEATH.



MEETS THE CARABINER REQUIREMENTS OF NFPA 1983, STANDARD ON LIFE SAFETY ROPE AND EQUIPMENT FOR EMERGENCY SERVICES, 2017 EDITION.

EMERGENCY SERVICES CARABINER IN ACCORDANCE WITH NFPA 1983 - 2017.

- 300090 CMC PROSTEEL SCREW-LOCK D BLACK/BRONZE CARABINER, GENERAL USE (G) MBS 50 KN (11,240 LBF)
- 300091 CMC PROSTEEL SCREW-LOCK D BLACK/BLACK CARABINER, GENERAL USE (G) MBS 50 KN (11,240 LBF)
- 300092 CMC PROSTEEL AUTO-LOCK D BLACK/SILVER ANSI CARABINER, GENERAL USE (G) MBS 50 KN (11,240 LBF)
- 300093 CMC PROSTEEL SCREW-LOCK OVAL BLACK/BRONZE CARABINER, GENERAL USE (G) MBS 40 KN (8,992 LBF)
- 300094 CMC PROSTEEL AUTO-LOCK OVAL BLACK/SILVER ANSI CARABINER, GENERAL USE (G) MBS 40 KN (8,992 LBF)
- 300096 CMC/KONG DNA AUTO-LOCK BLACK/SILVER CARABINER, GENERAL USE (G) MBS 40 KN (8,992 LBF)

MEETS THE REQUIREMENTS OF ANSI Z359.12:2019: CONNECTING COMPONENTS FOR PERSONAL FALL ARREST SYSTEMS.

- 300092 CMC PROSTEEL AUTO-LOCK D BLACK/SILVER ANSI CARABINER
- 300094 CMC PROSTEEL AUTO-LOCK OVAL BLACK/SILVER ANSI CARABINER
- 300095 CMC/KONG DNA AUTO-LOCK BLACK/SILVER ANSI CARABINER

The compliance of conformity to ANSI Z359.12:2019 performed by the following the notified bodies:

- n° 0123 - TÜV SÜD Product Service GmbH Daimlerstraße 11 - 85748 Garching – Germany (300392 & 300394)
- n° 2008 DOLMITICERT scarl - zona industriale Villanova – 32013 Longarone (BL) – Italia (300395)

USER INFORMATION

User Information shall be provided to the user of the product. NFPA Standard 1983 recommends separating the User Information from the equipment and retaining the information in a permanent record. The standard also recommends making a copy of the User Information to keep with the equipment and that the information should be referred to before and after each use. Additional information regarding life safety equipment can be found in NFPA 1500, Standard on Fire Department Occupational Safety, Health, and Wellness Program, and NFPA 1858, Standard on Selection, Care, and Maintenance of Life Safety Rope and Equipment for Emergency Services and the ANSI Z359 series of Fall Protection standards.

INSPECTION

Inspect the equipment according to your department's policy for inspecting life safety equipment. Inspect the equipment prior to entry into service, after each use, and at least once every 12 months. The equipment should be thoroughly inspected by an inspector that meets your department's training standard for inspection of life safety equipment. Keep a record of the date, person performing the inspection and results, as well as the date of first use, name of users and any other pertinent information necessary to keep accurate track of the equipment's usage history in the equipment log or on a tag that attaches to the equipment. Each user should be trained in equipment inspection and should inspect the equipment before each use. Inspect the equipment for cracks, sharp edges, dents, corrosion, burrs or excessive wear. Minor nicks or sharp spots may be smoothed with an emery cloth. If any of the above is noted, or if the equipment has been subjected to shock loads, fall loads, or abuse other than normal use, remove the equipment from service and destroy it. If there is any doubt about the service ability of the equipment, remove the equipment from service and destroy it. The service life of equipment depends greatly on the type of use and the environment of use. Because these factors vary greatly, a precise service life of the equipment cannot be provided.

LIMITATIONS AND PROPER USE

All carabiners are designed to specific performance criteria. Be aware of load limitations, manner used, and proper technique. Do not overload a carabiner. Carabiners can fail under improper use conditions such as cross loading, gate open loading, loading other than major axis, applying a shear or torsional load to the carabiner, etc. If you are not sure of proper application or technique, seek proper training in carabiner use and technical rope application.

COMPATIBILITY

300092, 300094, and 300095 are connecting components in accordance with ANSI/ASSP Z359.12-2019, used to connect two or more pieces of equipment together in Personal Fall Arrest Systems. Ensure compatibility with other components in the fall protection system.

CARRYING, MAINTENANCE & STORAGE

Clean and dry this equipment after each use to remove any dust, debris and moisture. During use, carrying and storage keep the equipment away from acids, alkalis, rust and strong chemicals. Do not expose the equipment to flame or high temperatures. Store in a cool, dry location. Do not store where the equipment may be exposed to moist air, particularly where dissimilar metals are stored together.

MATERIALS

Connector Materials:

- **Frame and Gate:** Carbon Steel
- **Additional Components (varies per model):** Steel, Bronze, Stainless Steel, Delrin

REPAIR

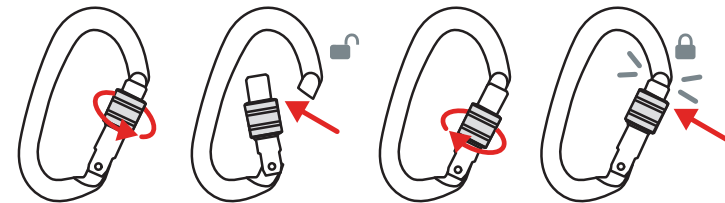
All repair work shall be performed by the manufacturer. All other work or modifications void the warranty and releases CMC/KONG from all liability and responsibility as the manufacturer.

SAMPLE LOG

The sample log suggests records that should be maintained by the purchaser or user of life safety equipment.

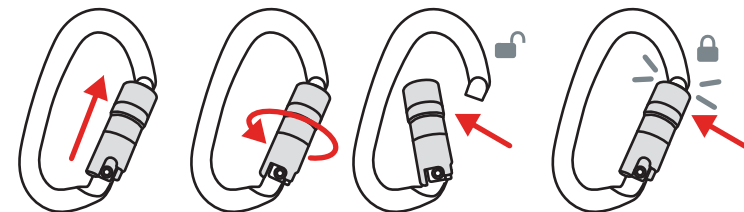
Equipment Inspection and Maintenance Log			
Item #	Date in Service		
Brand/Model	Strength		
Date	How Used or Maintained	Comments	Name

Screw-Lock Use



(1)Unscrew gate to unlock (2)Push gate in to open (3)Screw gate to close (4)Confirm gate locking

Auto-Lock Use



(1)Push gate up (2)Twist gate to unlock (3)Push Gate in to open (4)Release Gate to Lock (5)Confirm Gate Locking

⚠ Do not use if gate fails to lock or open properly.



CMC Rescue, Inc.
6740 Cortona Drive, Goleta, CA 93117, USA
805-562-9120 / 800-235-5741
cmcpro.com
ISO 9001 Certified
©2021 CMC Rescue, Inc. All rights reserved
CMC and **XC** are registered marks of CMC Rescue Inc.
CMC Control No.: 300096ML_Rev00

NFPA 1983 (2017 ED) "G"		NFPA 1983 (2017 ED) "G" AND ANSI Z359.12 (19)		ANSI Z359.12 (19)	
	300090 CMC ProSteel Screw-Lock D Black/ Bronze Carabiner		300091 CMC ProSteel Screw-Lock D Black/ Black Carabiner		300092 CMC ProSteel Auto-Lock D Black/Silver ANSI Carabiner
	300093 CMC ProSteel Screw-Lock Oval Black/ Bronze Carabiner		300096 CMC/Kong DNA Auto-Lock Black/Silver Carabiner		300094 CMC ProSteel Auto-Lock Oval Black/ Silver ANSI Carabiner
					300095 CMC/Kong DNA Auto-Lock Black/Silver ANSI Carabiner

Dimension	300090		300091		300092		300093		300094		300095		300096	
	mm	in	mm	in	mm	in	mm	in	mm	in	mm	in	mm	in
	76.5	3.01	76.5	3.01	76.5	3.01	62	2.44	62	2.44	65	2.56	65	2.56
	114	4.49	114	4.49	114	4.49	110	4.33	110	4.33	108	4.25	108	4.25
	26	1.02	26	1.02	25	0.98	21	0.78	20	0.78	18	0.71	19	0.75

Weight	300090		300091		300092		300093		300094		300095		300096	
	g	oz	g	oz	g	oz	g	oz	g	oz	g	oz	g	oz
	240	8.5	240	8.5	265	9.3	205	7.2	220	7.8	230	8.1	215	7.6

Strength	300090		300091		300092		300093		300094		300095		300096	
	kN	lbf	kN	lbf	kN	lbf	kN	lbf	kN	lbf	kN	lbf	kN	lbf
	50	11240	50	11240	50	11240	40	8992	40	8992	40	8992	40	8992
	18	4047	18	4047	18	4047	12	2698	12	2698	12	2698	12	2698
	16	3597	16	3597	20	4496	16	3597	20	4496	16	3597	16	3597
	\	\	\	\	16	3597	\	\	16	3597	16	3597	\	\
	\	\	\	\	16	3597	\	\	16	3597	16	3597	\	\

Find the latest version this manual at cmcpro.com

GENERAL USE (G)
NFPA 1983 (2017 ED)
ANSI Z359.12 (19)

CMC PROSTEEL CARABINERS
CMC/KONG DNA CARABINERS



Product No. 300096
CMC/Kong DNA Auto-Lock Black/Silver Carabiner

⚠ WARNINGS

Activities involving the use of this equipment are potentially dangerous. Special knowledge and training are required to use this product. You are responsible for your own actions and decisions. Before using this device, you must:

- Read and understand these user instructions and warnings.
- Familiarize yourself with its capabilities and limitations.
- Be a competent person and/or get specific training in its proper use, or be under the direct supervision of a trained or otherwise competent person.
- Understand and accept the risks involved.

FAILURE TO HEED ANY OF THESE WARNINGS MAY RESULT IN SEVERE INJURY OR DEATH.