

**WARNING**

This device will NOT lock up automatically. Releasing the braking hand may result in death or serious injury. It is your responsibility to apply sufficient force with your brake hand all the time. Climbing and mountaineering are inherently dangerous. It is the sole responsibility of the purchaser or user of this climbing equipment to get proper instruction and act safely and with caution while using this equipment. This product is designed for climbing and mountaineering only. Always inspect the device after major impacts and before climbing. Do not use this device if it is damaged. You are responsible for your own actions and decisions.

This product must only be used by competent and responsible persons, or those placed under the direct and visual control of a competent and responsible person.

Your safety is related to the integrity of your equipment. Please inspect the Safeguard belay device before, during, and after use to ensure that it is in usable condition.

The device protects the final user from falls from a height during climbing and mountaineering, particularly during belaying and abseiling with regular speed.

**PPE - Personal Protective Equipment**

The Safeguard has an approximate life span of 10 years.

The Safeguard is constructed with hot forged aluminum and stainless steel that can wear.

**Storage And Transportation:**

-It is preferable to store your equipment in a pack to protect it.

-Store your equipment in a well-ventilated area out of direct sunlight (UV).

-Reserve a specific place for your equipment. Warning: any contact with harsh or corrosive substances (e.g. acids) is prohibited. If you have a doubt, retire your equipment.

-Never store your gear in a damp place where mold can develop (damp closets, bags and waterproof containers with moisture inside). For long-distance travel, beware of moisture in containers during transit, in ports or airports, especially in salty environments.

**Maintenance:**

-After use in a salty environment (seaside), rinse with fresh water.

- Use a small brush to remove oily dirt or mud.

-Wash your gear in lukewarm soapy water (ph neutral, 30°C maximum), then rinse thoroughly with fresh tap water.

-Do not use acid or harsh cleaners. Do not use WD-40 type degreasers as these products remove lubricants and their abrasive effect can accelerate wear.

-Do not use a high pressure water sprayer. High pressure water spray can remove lubricants and damage joints.

-If lubricating is necessary. Lubricate only with fluid oils (machine oil) or graphite powder. After lubricating, clean oil residue with a cloth to avoid getting oil on slings or ropes.

The Safeguard is an assisted braking belay device for rock climbing. It can be used to belay a climber on lead or top-rope, and to lower the climber.

EN 15151-1:2012 Type 6: devices for belaying and rappelling without a panic locking function. This product must be used for its designated purpose.

This product meets the requirements of Regulation (EU) 2016/425 on personal protective equipment. The EU declaration of conformity is available at MadRock.Com.

Verify that this product is compatible with other elements of the system in your application (e.g. EN 12275 connectors, EN892 ropes, and/or EN 12277 harness).

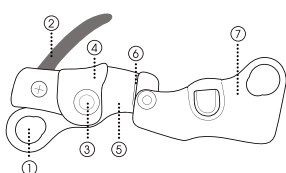
DO NOT tie a knot or attach a mechanical braking device to the braking side of the rope. The Safeguard is designed to use the dynamic belay system and requires the rope to slide through the device to absorb the shock. If a mechanical device or a knot is placed at the braking side of the rope while the device is in use, it may cause the Safeguard to break.

Depending on rope diameter, slipperiness of the rope, whether the rope is wet, icy or other factors, the braking effect will vary.

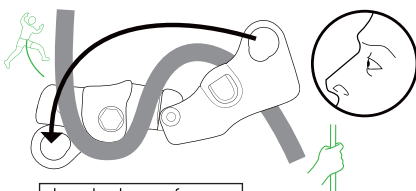
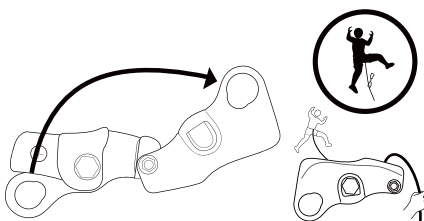
Please test and practice with the Safeguard belay device before use to familiarize yourself with the braking effect.

Please test and practice with the Safeguard belay device when switching between different diameter ropes.

The Safeguard will accommodate 8.9-11.0 mm diameter single dynamic rope according to EN 892. Warning: commercially, nominal rope diameters have a tolerance of up to +/- 0.2 mm. When the rope being used in conjunction with the Safeguard is wet or icy, it will reduce the friction on the rope and it may slip.



- 1- Attachment Point
- 2- Handle
- 3- Axel
- 4- Cam
- 5- Fixed Side Plate
- 6- Friction Plate
- 7- Side Plate

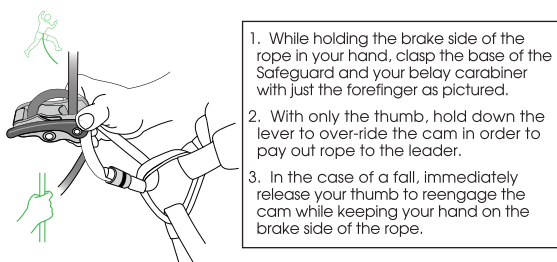
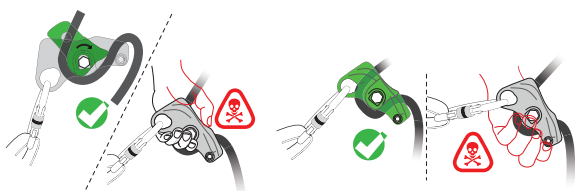
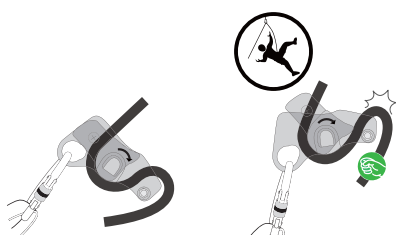
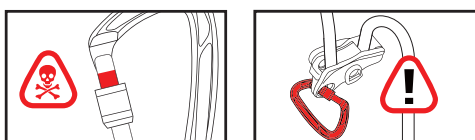
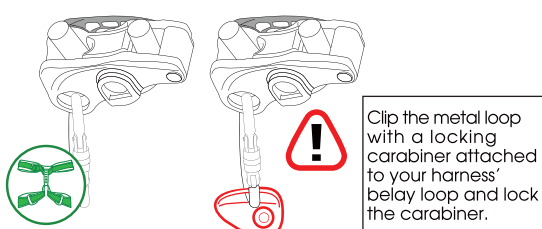


Insert a loop of rope through the device.

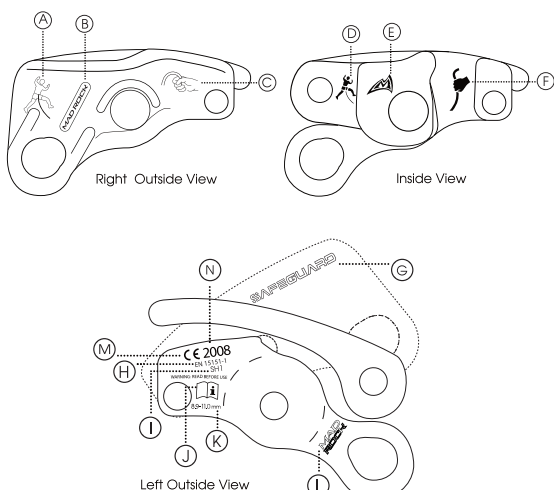


**NELSON SPORTS INC., DbA Mad Rock**  
12810 Florence Ave, Santa Fe Springs, CA 90670

**MadRock.Com**



## SAFEGUARD Traceability/ Markings



A- Climber  
B- Mad Rock Logo  
C- Brake Hand  
D- Climber  
E- Mad Rock Logo  
F- Brake Hand  
G- Product Logo  
H- Number of the European standard applied  
I- Batch Number  
J- Read The Information Booklet  
K- Rope Diameter  
L- Mad Rock Logo

M- CE Mark  
N- Number of the notified body involved in the production control phase and in the conformity assessment of the PPE.

DolomitiCert Scarl  
Z.I. Villanova 7/A  
32013 Longarone (BL)  
Italy NB 2008