



Petzl
ZI de Crolles
Cidex 105 A
38920 CROLLES / France

From: After Sales Service - Petzl
2015
Contact : paul@spelean.com.au +61 2 9966 9800

Crolles February 3rd

Object: Investigation on a visible surface mark on the head of the ASAP LOCK screw

Facts:

End of year 2014, a screw with a visible mark, which appears to be a crack, was reported to Petzl.



Actions taken for investigation:

- Petzl has sent samples of these screws to a metallurgic laboratory.
- Petzl investigated the potential causes with its screw supplier.
- Petzl tested the screw with excessive torque, which stripped the screw, while the head remained intact.

Conclusions of this investigation:

- This visible mark on the head of the screw is the result of the manufacturing process. **It is a surface defect of the screw head that does not affect its performance (see attached images in Annex).**
- This mark does not result from usage. It does not depend on the condition of use. It is important to note that this mark is superficial and the result of manufacturing process.

Decisions:

- Petzl immediately initiated a corrective action in place at the assembly line and a 100% visual inspection is done in line to make sure that all new screws will be unmarked. All products on the market are now supplied with a screw without any marks.
- Petzl supplier also includes a visual inspection in his manufacturing process.
- Petzl accepts that this mark may bring confusion during PPE inspection, but there is no risk for end user's safety.
- Replacement screws are in transit from Petzl in France and will be available, if required, in the next week. If replacement screws are required, please contact Paul LIDGARD (paul@spelean.com.au) and as soon as the replacement screws become available they will be sent.

ANNEX



PLANCHE N°1

Examen macrographique
À la loupe binoculaire

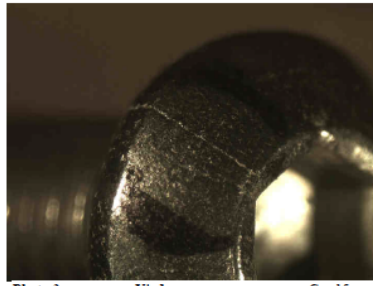


Photo 3 Vis 1 G = 15

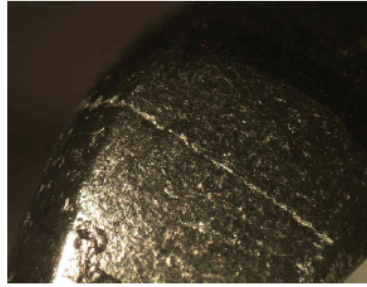


Photo 4 Vis 1 G = 30

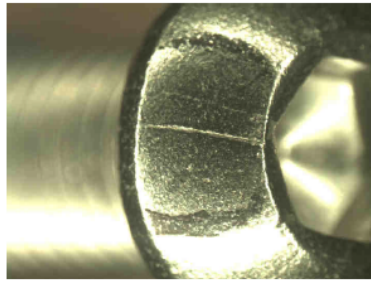


Photo 7 Vis 2 G = 15

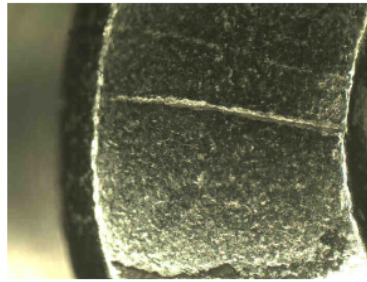


Photo 8 Vis 2 G = 30

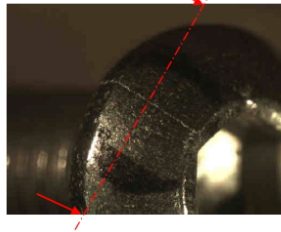


PLANCHE N°2

Vis 1
Observations micrographiques
Sans attaque

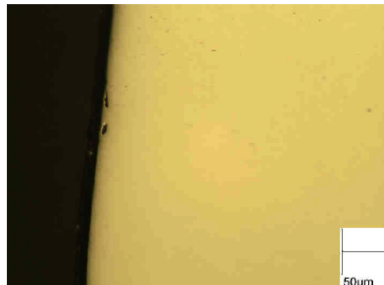


Photo 15 G = 200

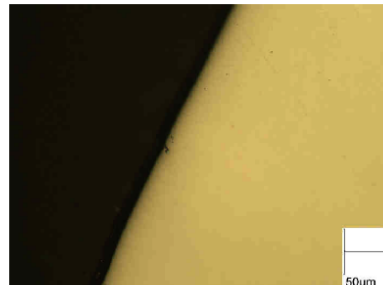
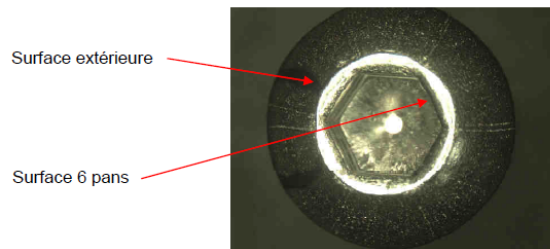


Photo 16 G = 200



Surface extérieure

Surface 6 pans

PLANCHE N°3

Vis 2
Observations micrographiques
Sans attaque
Enrobage à plat sur la tête

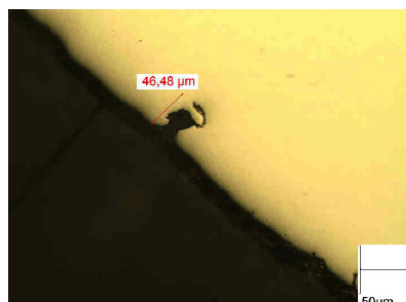


Photo 22 Surface extérieure G = 200

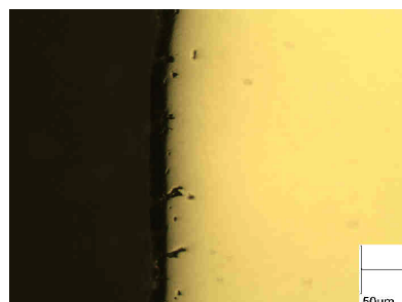


Photo 23 Surface extérieure G = 200